

Using CLAX trolleys in the workplace

Training:

Employers must provide training to employees, so they have the skills to select and safely use trolleys in the workplace. Training must include information and instruction in identifying hazards and controlling risks from trolleys and safety procedures when using trolleys.

Reducing the effort:

Employers should consider the following guidance to reduce the effort of employees using trolleys:



! TO START A LOAD MOVING

- Use the carts only after being shown its operational features.
- Position trolleys with wheels in the direction of travel.
- Encourage employees to use leg muscles and whole-body momentum to start the push or pull of a load.

! TO KEEP THE LOAD MOVING

- Use the Clax cart with the handle locked into either two ergonomic handle height positions
- Regularly check and ensure there are no loose components
- For pushing, ensure handles allow the hands to be positioned just above waist height and with elbows bent close to the body.
- For pulling, ensure handles allow the hands to be positioned just below waist height, allowing employees to adopt a standing position rather than a seated posture.



! TO STOP A LOAD

- Show where to deliver loads.
- Plan the flow of work.
- Encourage employees to slow the load gradually.
- Always use brake on trolley when loading or unloading.



FAQ

Q: What is the load capacity of CLAX?

A: CLAX can carry up to 60kg/133lbs on both trays. The upper tray carries 20kg/44lbs, the lower 40kg/88lbs.

Q: Can I use CLAX in any weather condition?

A: CLAX was designed for outdoor usage. It consists of weather resistant plastic and aluminium.

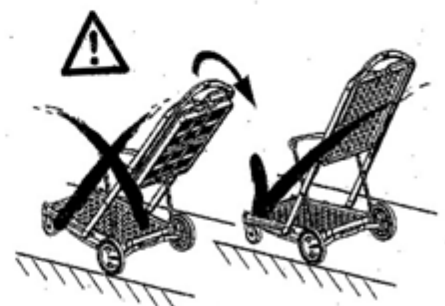
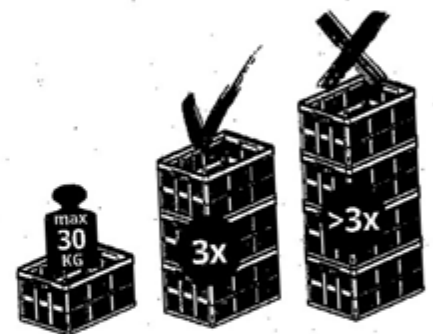
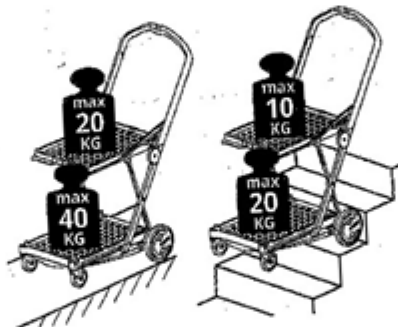
Q: Do I have to assemble CLAX before I can use it?

A: We ship CLAX fully assembled. All you need to do is to attach the wheels.

Q: How does CLAX handle stairs and steps?

A: The back wheels of CLAX are exposed. CLAX can be pulled up easily over short stairs, steps or the sidewalk.

Visual Demonstration of how to use the Clax Cart



HEIGHT-ADJUSTABLE TROLLEYS

- Height-adjustable trolleys can have additional safety, ergonomic and productivity benefits. Keeping items close to the ground while moving them lowers the load's centre of gravity and maximises stability. Height adjustability also allows employees to raise items to comfortable ergonomic work heights.
- Using a Clax trolley to raise loads may eliminate the need for employees to lift and place items. Instead of lifting, employees can more easily slide items into position on a conveyor, bench or shelf or into the rear of a vehicle.

LOAD CAPACITY

- Ensure the Clax is always loaded in accordance with the capacities of the top and bottom shelf.
- The basket provided has located on both shelves, so always ensure they are positioned correctly when loading the cart.



HIGHLIGHTS

FOLDABLE

Simply open and close in just 2 seconds, with just one touch of a button.

WRAP UP

Transport standard folding boxes, beverage crates and much more with Clax.

BRAKE SYSTEM

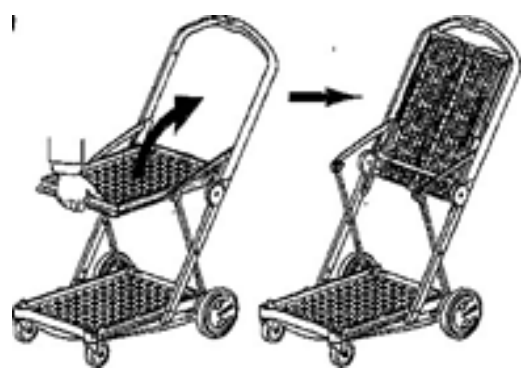
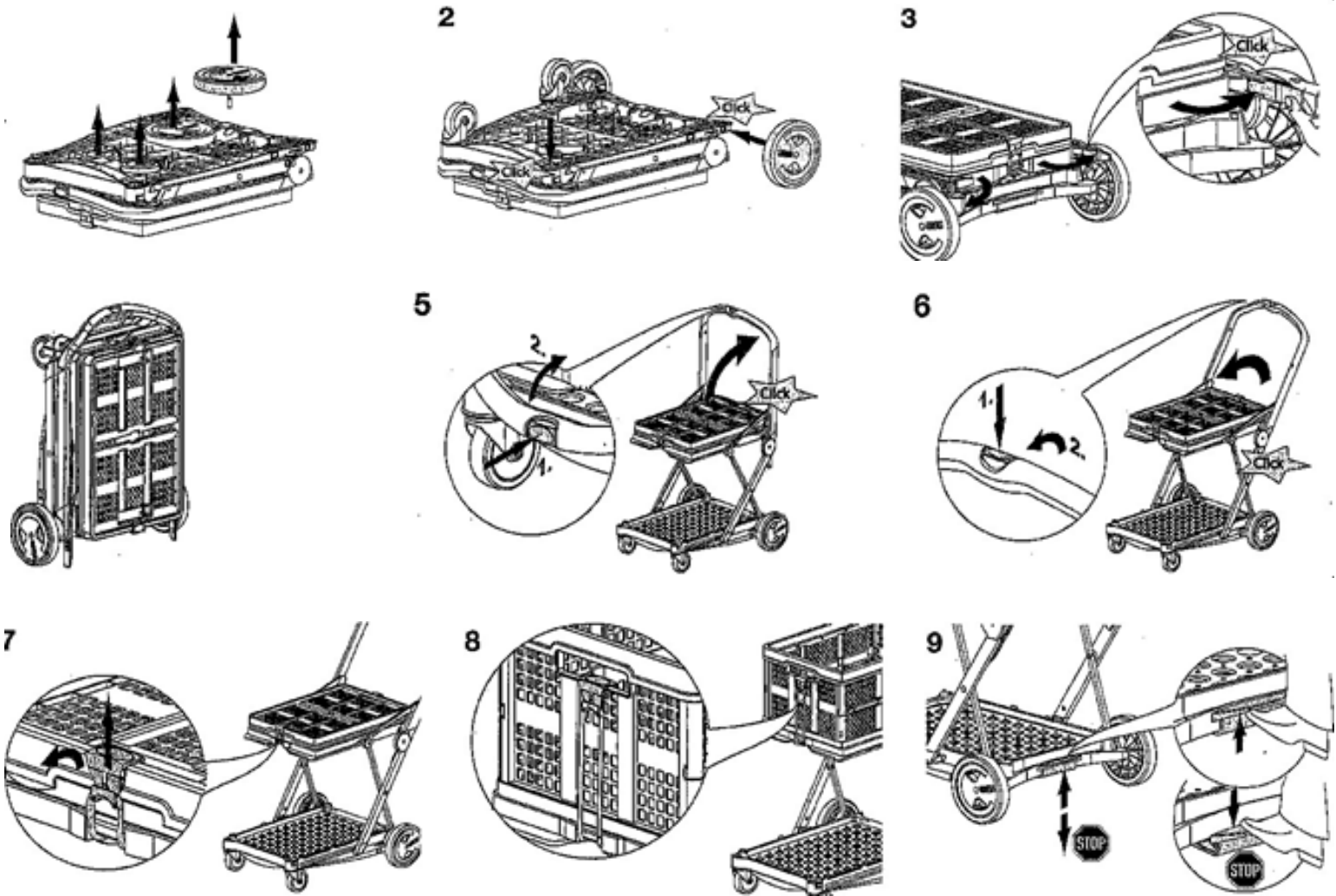
Safe loading and unloading by the parking brake.

SAFE STOP

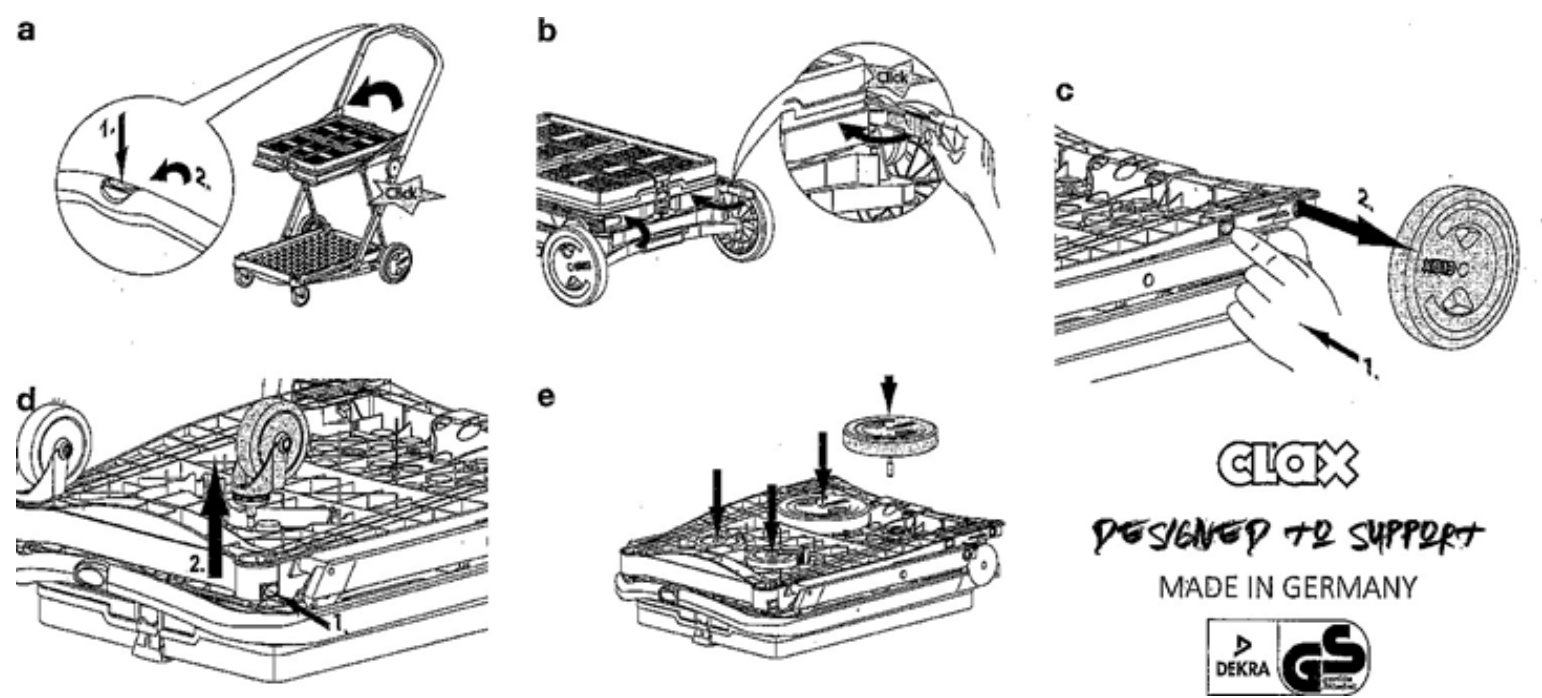
Lashing strap to fix the folding box on the upper shelf.

WITHSTAND

Safe stand when closed thanks to the props.



Dimension with wheels attached: 55 x 71 x 18 cm
Dimension with wheels detached: 47 x 67 x 11 cm
Unfolded: 55 x 102 x 91 cm
Weight: 59 kg



CLOX
DESIGNED TO SUPPORT
MADE IN GERMANY
